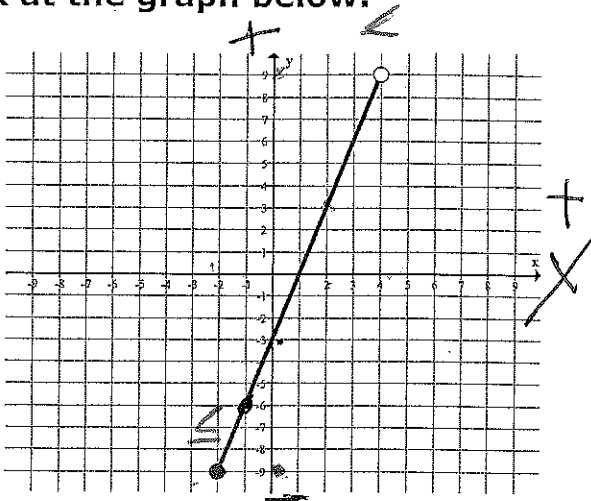


Function Notation Notes

Note:  $f(x) = y$

1) Look at the graph below.



a. What is  $f(-1)$ ? what is  $y$ , when  $x = -1$

$$f(-1) = -6$$

b. What is  $f(2)$ ?

$$f(2) = 3$$

c. What is  $f(2) - f(-1)$ ?

$$3 + 6 = 9$$

d. What is  $x$  when  $f(x) = -3$ ? What is  $x$ , when  $y = -3$

$$y \quad \boxed{x = 0}$$

e. Does the graph represent a function?

Justify your answer.

yes, passed the VLT

f. What is the domain?  $-2 \leq x < 4$

Range?  $-9 \leq y < 9$