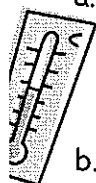


Graphing Linear Inequalities

Homework

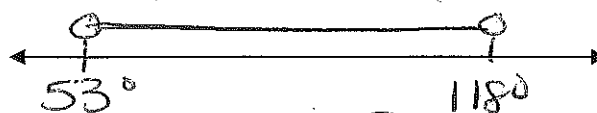
Name KEY
Date _____ Period _____

1. Write and graph an inequality that represents the given situation.



a. The temperatures in Plano are greater than 53°F and less than 118 °F in August.

x: temp $53 < x < 118$



b. The typical caloric intake for a 15 year old boy is greater than 1,500 but no more than 3,000 calories.

c: calories $1500 < c \leq 3000$

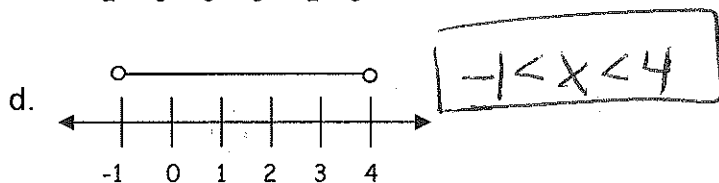
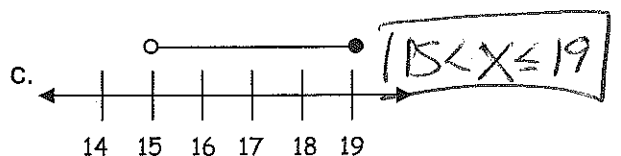
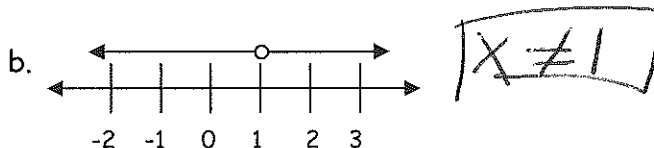
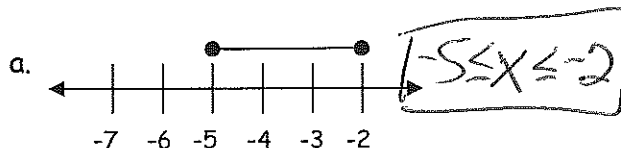


c. An elevator can run from 7 floors below the ground (-7) to the 120th floor of a skyscraper.

f: floors $-7 \leq f \leq 120$



2. Write the inequality represented by the graph.



3. Choose a graph from question 2, and write a situation that is represented by the graph.

c. I have ~~more~~ more than 15 pens but NOT more than 19 pens in my desk.

4. Which is not a solution of the inequality $-2 < x \leq 4$?

- A. 0 **B. -2** C. 1.5 D. 4
- $-2 < 0 \leq 4$ $-2 < -2 \leq 4$ $-2 < 1.5 \leq 4$ $-2 < 4 \leq 4$
- True False True True

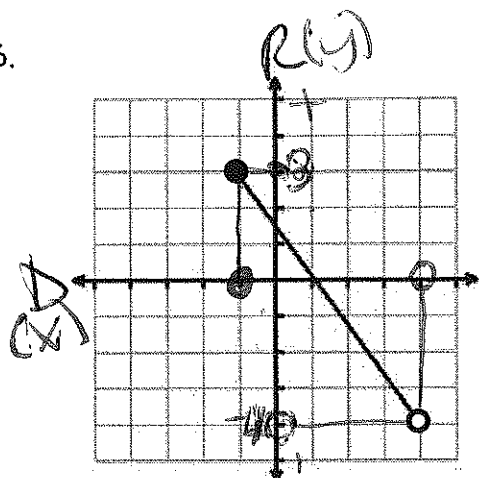
5. Which graph represents the solution of $-1 \leq x \leq 6$?



Linear Inequalities LI4

Write the domain and range using a compound inequality.

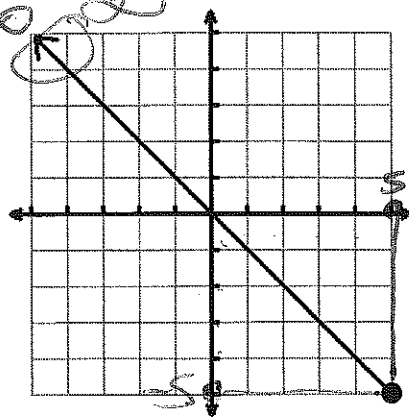
6.



Domain: $-1 \leq x < 4$

Range: $-4 < y \leq 3$

7.

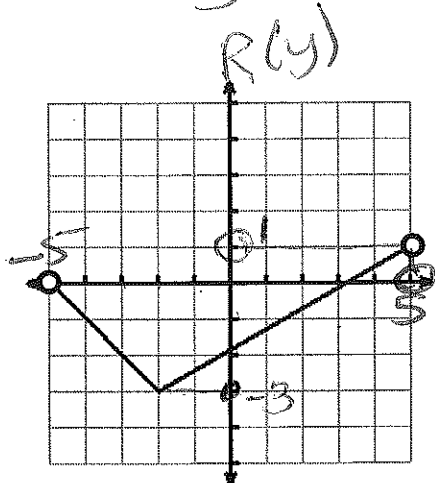


Domain: $-\infty < x \leq 5$

$-\infty < x \leq 5$

Range: $-5 \leq y < \infty$

8.



Domain: $-5 < x < 5$

Range: $-3 \leq y < 1$