

Name: _____ Date: _____ Period: _____

Multiplying Polynomials Homework:

1) $3e(2e - 5)$

$$6e^2 - 15e$$

2) $7f(3f^2 + f)$

$$21f^3 + 7f^2$$

3) $5m(11m - 4)$

$$55m^2 - 20m$$

4) $-0.25h(8h^2 + 4h - 8)$

$$-2h^3 - h^2 + 2$$

5) $3x(5x + 4)$

$$15x^2 + 12x$$

6) $-3u(3u + 1)$

$$-9u^2 - 3u$$

7) $6qr(2qr^2 + qr)$

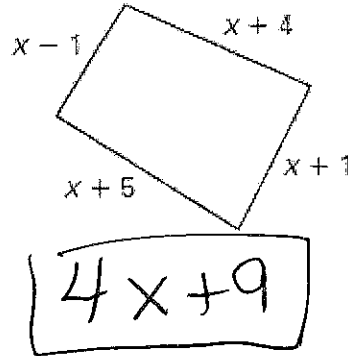
$$12q^2r^3 + 6q^2r^2$$

8) $5xy(x^2y - 2x + y)$

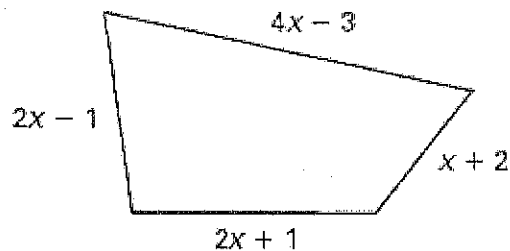
$$5x^3y^2 - 10x^2y + 5xy^2$$

For #9 and #10, write a polynomial that represents the perimeter of the figure. Simplify completely. *CLT*

9)



10)



$$4x + 2x + 2x + x = 9x$$
$$-3 - 1 + 1 + 2 = -1$$

$$9x - 1$$