

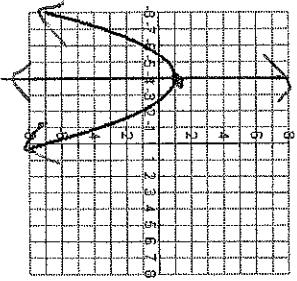
Quadratic Relationships with Graphs

Homework

Name 45
 Date Period

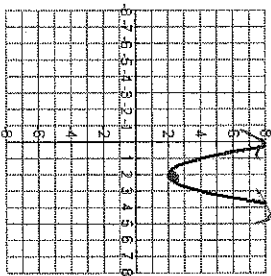
State the following for the graphs of the following parabolas:

1.



Vertex: $(-4, 1)$
 Max/Min
 AOS: $X = -4$
 Domain: \mathbb{R}
 Range: $\mathbb{R} \leq 1$

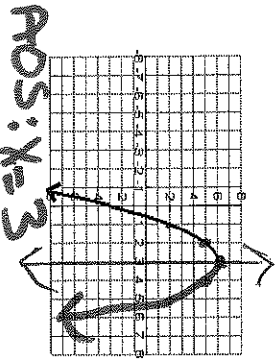
2.



Vertex: $(2, 2)$
 Max/Min
 AOS: $X = 2$
 Domain: \mathbb{R}
 Range: $\mathbb{R} \geq 2$

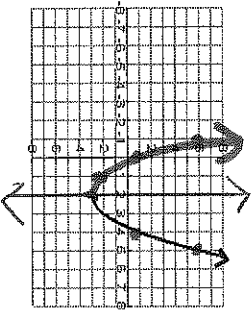
Use what you know about characteristics of parabolas to complete the graphs. Put a point at the vertex. Draw the axis of symmetry. Name the coordinate pairs of two corresponding points that are symmetrical.

3. $(2, 5)$ $(4, 5)$

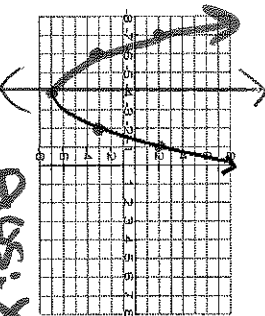


AOS: $X = 3$

4. $(4, 1)$ $(0, 1)$



5. $(-6, -3)$ $(-2, -3)$



AOS: $X = -4$